



HAVEN

HSP
HAVEN
STAR
PARTY™

A ROCKLAND ASTRONOMY CLUB EVENT

AUG 28 – SEPT 1
2024









OVERVIEW

Dark Sky Observing At Its Best

RAC Members-Only Adult Observing Event
4 Nights / 5 Days All-Inclusive Camping
1/2-acre Observing field treated for ticks
Strictly red lights only after dark
CARRY IN / CARRY OUT site

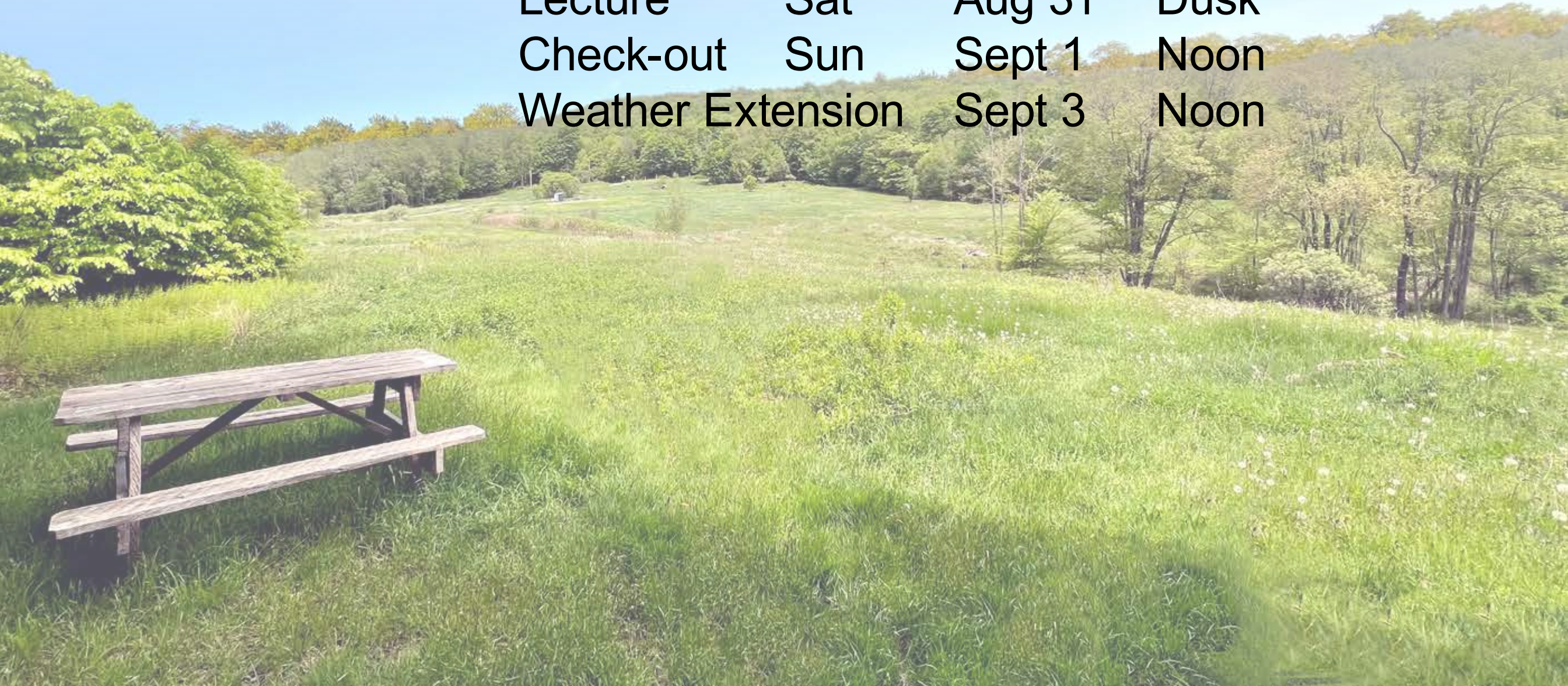
LOCATION	SQM*	NELM**
Cherry Springs, PA	21.8	7.0
Star Haven, NY	21.5	6.8
Stellafane, VT	21.47	6.8
Taghkanic, NY	21.21	6.7
Wawayanda, NJ	20.14	6.1

**SQM: Sky Quality Meter. **NELM: Naked-eye limiting magnitude.*



DATES

Check-in	Thurs	Aug 28	Noon
StarBQ	Sat	Aug 31	4 pm
Lecture	Sat	Aug 31	Dusk
Check-out	Sun	Sept 1	Noon
Weather Extension		Sept 3	Noon





AMENITIES

Solar-powered 120V charging station + USB ports

Drinks/snacks until 1am on clear nights

Large picnic + fold-up tables

Canopies for shelter / meals w/ red lights

Toilets on site

Potable Cartesian Well-water

Sink & Shower, gravity-fed





CAMPING

First come/first serve open camping & parking
NO reservations for sites or site locations

6 Campsites w/ picnic tables, firepits, benches, woodchip tent areas, etc.

Each campsite can host 3-5 tents/vehicles

One small Cabin w/ 2 beds, wood stove, & dining area: Reserve for \$39/night (2 guests)

Two 8 x 16-ft. Tent Platforms: Reserve for \$15/night (Accommodates 4 guests; shaded area)

12-Acre gently rolling hillside accommodates unlimited tailgate & tent campers, RVs, etc.



FEES

\$75 per person non-refundable TD Contribution
(Every attendee must join/renew RAC before event)

StarBQ & other foods are separate purchases

StarBQ is \$20 (order online by Aug 26)

Walk-ins after 8/27 accepted with \$90 (cash only)

NO Family or Group discounts

NO Children under age 12

NO Pets or Gas-powered Generators

Campers / Observers may stay or go, setup
or breakdown as desired during daylight hours

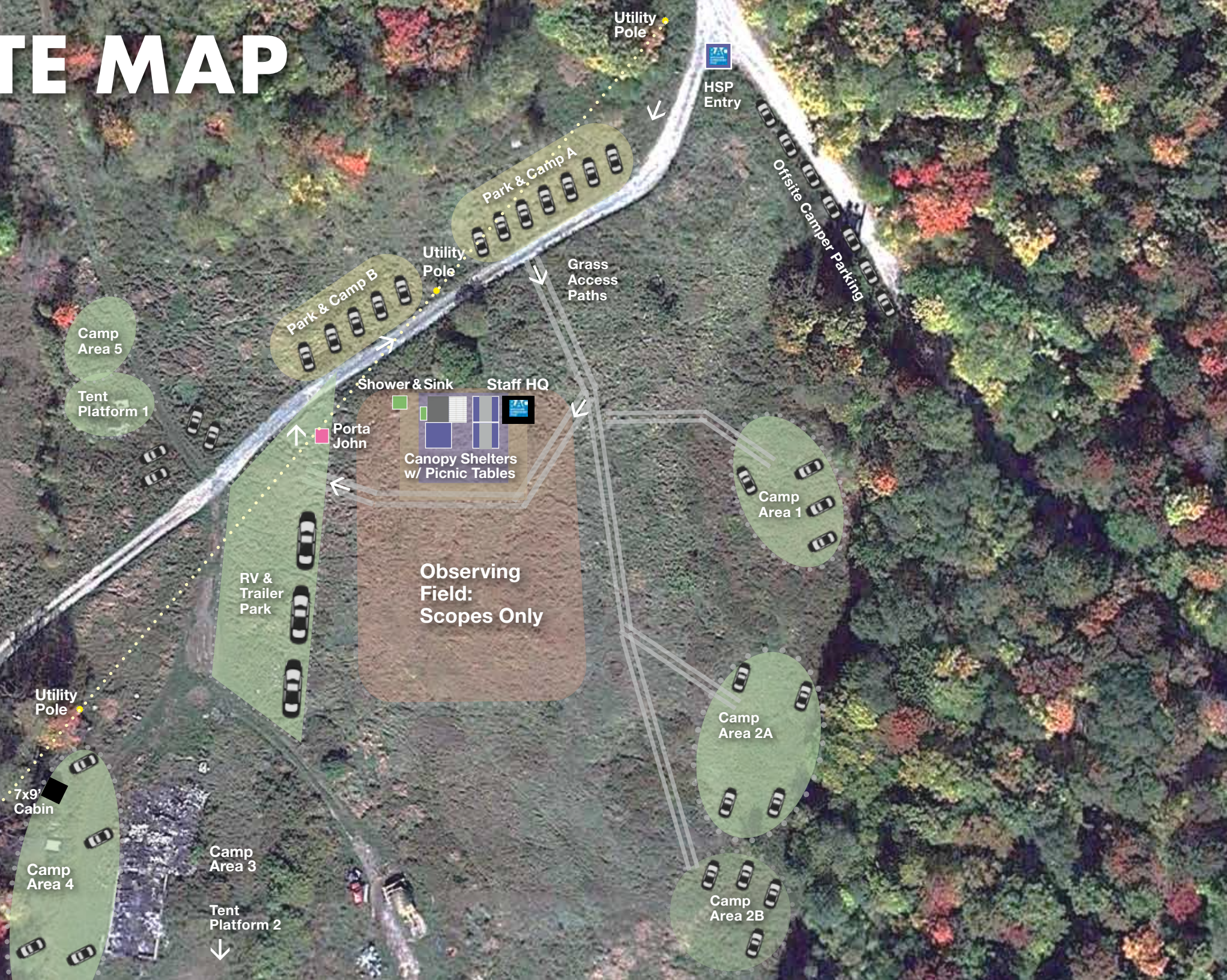


SITE MAP



Haven for Humanity

Road to HH Main Facility



Utility Pole



HSP Entry

Offsite Camper Parking

Park & Camp A

Park & Camp B

Grass Access Paths

Utility Pole

Camp Area 5

Tent Platform 1

Shower & Sink

Staff HQ

Porta John

Canopy Shelters w/ Picnic Tables

Camp Area 1

RV & Trailer Park

Observing Field:
Scopes Only

Camp Area 2A

Camp Area 2B

7x9' Cabin

Camp Area 4

Camp Area 3

Tent Platform 2





CAMPING OFF-SITE

There are many commercial camp sites & Local Hotels/Inns/B&Bs available within 15-30 mins of Haven w/ full amenities
Note: Off-site campers must park vehicles on adjacent road to prevent headlight issues

Mongaup Pond Campground

Little Pond Campground

Quapaw Campground

Little Spring Brook RV Park

Mud Pond & Trout Pond Campgrounds

Beaverkill Campground

Butternut Grove Campsite

Roscoe Campsites

Russell Brook Campsites

Willowemoc Campgrounds

Hemlock Falls Camping

Knights Inn Liberty

Budget Inn

Reynolds House Inn

Catskills Adventures

Days Inn Liberty

Rest Co.

Anthony's House

Best Western Monticello

Inn at Monticello



SECURITY

RAC staff on site 24/7

Campers are responsible for their own gear
Everyone must sign a waiver to attend





LOCAL SERVICES/ACTIVITIES

Livingston Manor (10 miles):

- Full grocery market w/ deli
- Two micro-breweries
- Several sit-down/takeout restaurants/pizzerias
- Ice cream stand
- Bakery
- Organic foods market
- Sunday organic farmer's mkt
- Two gas stations
- Hardware store/tools
- Pharmacy
- Boutiques
- Sports/camping gear (Roscoe)

Nearby Activities:

- Biking/Mountain biking
- Swimming: freshwater lakes
- Boat rentals, beautiful local lakes
- Fishing, streams
- Hiking: 40-acre open woods
- Horseback riding farms nearby
- Whitewater rafting (mild) on the Delaware River
- Wildlife watching: Bald eagles, songbirds, foxes, & baby bear
- Antiquing



RULES

Carry-in/Carry out: Police your own garbage.

Dispose of trash in town, leave in vehicle or take home.

All Food & food-based refuse must be secured from wild animals, bears, coyotes, etc. Store in vehicle. Do NOT feed cats on site!

Quiet Hours: Dusk to Dawn. Sorry, NO generators

NO Music playing at any time: Use earpods

NO Camp or Gear Set-up after 8pm

NO Driving on site after 8pm (except to leave Parking Area A or B)

Red Lamps & Filters required

NO Vehicle Lights or other unshielded lighting after 8pm

NO Camp Fires after 8pm on clear observing nights.

Always extinguish fire before leaving campsite.

Wood for firepits is available for purchase from Haven crew. Ask.

NO Pets at Star Haven site

NO Smoking: Observing Field is a Smoke-Free Zone

NO Bikes are allowed on Observing Field at any time

NO Firearms or Fireworks are allowed at Star Haven

Tick Spray highly recommended!

Stay/Go as desired during daylight hours

Astro-Imaging: Haven Star Party Site: Vinnie Coulehan & Others

